

**Neosys Technology Inc.**

**PCIe-PoE572bt/ PCIe-N572 Series**

**User Manual**  
Revision 1.0

# Table of Contents

Table of Contents .....	2
Legal Information .....	3
Contact Information .....	4
Notices .....	5
Safety Precautions .....	6
Service and Maintenance .....	7
ESD Precautions .....	7
About This Manual .....	8
<b>1 Introduction</b>	
1.1 PCIe-PoE572bt Specifications.....	10
1.2 PCIe-N572 Specifications .....	11
1.3 Dimension .....	12
<b>2 Setting Up Your Card</b>	
2.1 Unpacking Your PCIe-PoE572bt.....	13
2.2 Unpacking Your PCIe-N572.....	13
2.3 Status LEDs .....	14
2.4 DIP Switches .....	15
2.4.1 Switching Between at and bt Modes .....	15
2.4.2 Board ID Settings.....	16
<b>3 PCIe-PoE572bt/ PCIe-N572 Card Installation</b>	
3.1 Hardware Installation .....	18
<b>4 OS Support and Driver Installation</b>	
4.1 Operating System Compatibility .....	21
4.2 Driver Installation .....	21
<b>5 Network Settings</b>	
5.1 Jumbo Frame .....	22
5.2 NetworkDirect Functionality (RDMA).....	25
5.3 Receive Buffers .....	28
5.4 Transmit Buffers .....	30
5.5 Port Speed Configuration .....	32
<b>Appendix A Using Per-Port PoE On/Off Control</b>	
Driver Installation.....	34
Per-Port On/Off Control Function Reference.....	37
PCI_GetStatusPoEPort.....	37
PCI_EnablePoEPort.....	38
PCI_DisablePoEPort.....	39

# Legal Information

All Neousys Technology Inc. products shall be subject to the latest Standard Warranty Policy.

Neousys Technology Inc. may modify, update or upgrade the software, firmware or any accompanying user documentation without prior notice. Neousys Technology Inc. will provide access to these new software, firmware or documentation releases from download sections of our website or through our service partners.

Before installing any software, applications or components provided by a third party, customer should ensure that they are compatible and interoperable with Neousys Technology Inc. product by checking in advance with Neousys Technology Inc.. Customer is solely responsible for ensuring the compatibility and interoperability of the third party's products. Customer is further solely responsible for ensuring its systems, software, and data are adequately backed up as a precaution against possible failures, alternation, or loss.

For questions in regards to hardware/ software compatibility, customers should contact Neousys Technology Inc. sales representative or technical support.

To the extent permitted by applicable laws, Neousys Technology Inc. shall NOT be responsible for any interoperability or compatibility issues that may arise when (1) products, software, or options not certified and supported; (2) configurations not certified and supported are used; (3) parts intended for one system is installed in another system of different make or model.

# Contact Information

---

**Headquarters**  
**(Taipei, Taiwan)**

**Neosys Technology Inc.**

15F, No.868-3, Zhongzheng Rd., Zhonghe Dist., New Taipei City, 23586, Taiwan

Tel: +886-2-2223-6182 Fax: +886-2-2223-6183 [Email](#), [Website](#)

---

**Taichung Office**  
**(Taiwan)**

**Neosys Technology Inc.**

12F-7(K), No. 161, Gongyi Rd., West Dist., Taichung City 403516, Taiwan

Tel: +886-4-2321-6650 [Email](#), [Website](#)

---

**Americas**  
**(Illinois, USA)**

**Neosys Technology America, Inc.**

55 East Hintz Rd Wheeling, IL 60090, USA

Tel: +1-847-656-3298 [Email](#), [Website](#)

---

**China**

**Shanghai Neosys Technology Co., Ltd.**

Room 429, Building 33, Guiping Road 680, Shanghai 200233, China

Tel: +86-2161155366 [Email](#), [Website](#)

# Notices

**Copyright** All rights reserved. This publication may not be reproduced, transmitted, transcribed, stored in a retrieval system, or translated into any language or computer language, in any form or by any means, electronic, mechanical, magnetic, optical, chemical, manual or otherwise, without the prior written consent of Neosys Technology, Inc.

---

**Disclaimer** This manual is intended to be used as an informative guide only and is subject to change without prior notice. It does not represent commitment from Neosys Technology Inc. Neosys Technology Inc. shall not be liable for any direct, indirect, special, incidental, or consequential damages arising from the use of the product or documentation, nor for any infringement on third party rights.

---

**Patents and Trademarks** Neosys, the Neosys logo, Expansion Cassette, MezIO™ are registered patents and trademarks of Neosys Technology, Inc.  
Windows is a registered trademark of Microsoft Corporation.  
Intel®, Core™ are registered trademarks of Intel Corporation  
NVIDIA®, GeForce® are registered trademarks of NVIDIA Corporation  
All other names, brands, products or services are trademarks or registered trademarks of their respective owners.

---

**FCC Conformity** This equipment has been tested and found to comply with the limits for a Class A digital device, pursuant to part 15 of the FCC Rules. These limits are designed to provide reasonable protection against harmful interference when the equipment is operated in a commercial environment. This equipment generates, uses, and can radiate radio frequency energy and, if not installed and used in accordance with the instruction manual, may cause harmful interference to radio communications. Operation of this equipment in a residential area is likely to cause harmful interference in which case the user will be required to correct the interference at his own expense.

---

**CE Conformity** The product(s) described in this manual complies with all applicable European Union (CE) directives if it has a CE marking. For computer systems to remain CE compliant, only CE-compliant parts may be used. Maintaining CE compliance also requires proper cable and cabling techniques.

# Safety Precautions

Read these instructions carefully before you install, operate, or transport the system.

- Install the system or DIN rail associated with, at a sturdy location
- Install the power socket outlet near the system where it is easily accessible
- Secure each system module(s) using its retaining screws
- Place power cords and other connection cables away from foot traffic.
- Do not place items over power cords and make sure they do not rest against data cables
- Shutdown, disconnect all cables from the system and ground yourself before touching internal modules
- Ensure that the correct power range is being used before powering the device
- Should a module fail, arrange for a replacement as soon as possible to minimize down-time
- If the system is not going to be used for a long time, disconnect it from mains (power socket) to avoid transient over-voltage

# Service and Maintenance

- ONLY qualified personnel should service the system
- Shutdown the system, disconnect the power cord and all other connections before servicing the system
- When replacing/ installing additional components (expansion card, memory module, etc.), insert them as gently as possible while assuring proper connector engagement

## ESD Precautions

- Handle add-on module, motherboard by their retention screws or the module's frame/ heat sink.
- Avoid touching the PCB circuit board or add-on module connector pins
- Use a grounded wrist strap and an anti-static work pad to discharge static electricity when installing or maintaining the system
- Avoid dust, debris, carpets, plastic, vinyl and styrofoam in your work area.
- Do not remove any module or component from its anti-static bag before installation

# About This Manual

This manual introduces and describes how to setup/ install Neosys Technology PCIe-PoE527bt and PCIe-N572 10Gb frame grabber cards. The cards offer stable expandability, flexibility and fast Ethernet access to peripheral devices.

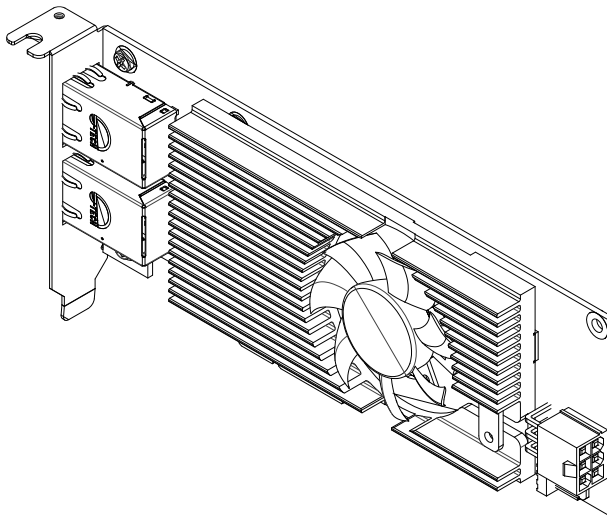
## Revision History

Version	Date	Description
1.0	Dec. 2024	Initial release

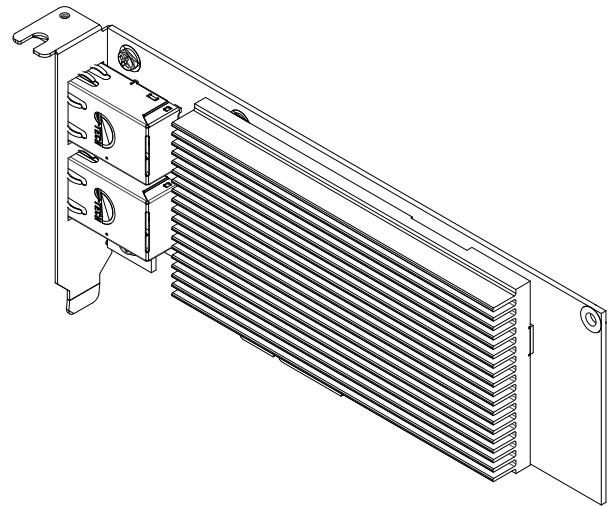


# 1 Introduction

The PCIe-PoE572bt is a rugged, wide-temperature dual-port 10G network adapter equipped with Remote Direct Memory Access (RDMA) and IEEE 802.3bt PoE++ support. Powered by the Broadcom® BCM57416 Ethernet controller, it supports jumbo frames up to 9.6 KB, making it ideal for applications such as RDMA-enabled cameras and outdoor Wi-Fi access points (APs).



**PCIe-PoE572bt**



**PCIe-N572**

As demand for 10 GigE industrial cameras grows in machine vision, traditional systems often suffer from high CPU usage due to packet handling and error checking. The PCIe-PoE572bt addresses this challenge with RDMA technology, reducing CPU usage by up to 90% compared to TCP/UDP protocols. RDMA enables direct, zero-copy data transfer to the host PC's memory, bypassing the CPU and operating system to free up computing resources for critical tasks like image processing algorithms.

The adapter also supports IEEE 802.3bt PoE++, providing up to 90W per port to power high-consumption PoE devices. Its -25 to 70°C wide operating temperature range ensures reliable performance in harsh environments, making it an excellent choice for powering PTZ cameras and outdoor Wi-Fi APs, which frequently require more than 30W and are exposed to outdoor conditions.

For enhanced flexibility, the PCIe-PoE572bt comes in a low-profile form factor, with a non-PoE version (PCIe-N572) available for applications not requiring PoE. As the first wide-temperature 10GbE RDMA frame grabber card with PoE++ support, the PCIe-PoE572bt delivers unparalleled performance and efficiency for machine vision, outdoor surveillance, and Wi-Fi infrastructure.

## 1.1 PCIe-PoE572bt Specifications

Product Model	PCIe-PoE572bt
Bus Interface	x4, Gen3 PCI Express
# of 10 GbE Port	2x 10 GbE ports by Broadcom 57416 controller, supporting 9.6 KB jumbo frame
Network Protocol Support	IEEE 802.3 Ethernet interface for 10GBASE-T (IEEE 802.3an) and 1000BASE-T (IEEE 802.3ab)
Support Link Speed	Support 10G/ 1G / 100M/ 10M link speed (CAT 6a cable required for 10G)
PoE Capability	Compliant with IEEE 802.3bt PoE++ Type 3/Type 4 PSE, with a maximum output of 90W on a single port. Compatible with 802.3bt (PoE++), 802.3at (PoE+), and 802.3af (PoE) PD. Different configuration for PoE power budgets: <b>Configuration A:</b> 66W from PCIe connector <b>Configuration B:</b> 180W from 6-pin power connector
RDMA over Converge Ethernet	Support RoCEv2 *Throughput over 9.62 Gbps (verified through PerfTest)
Cable Requirement	CAT 6a or better Ethernet cable (Max 100 meters)
EMC	CE/FCC Class B, according to EN 55032 & EN 55035
Operating Temperature*	-25°C to 70°C rugged operation with airflow
Dimension	Optional low-profile bracket: 167.65 mm (W) x 68.9 mm (H) Standard-height bracket: 167.65 mm (W) x 111.2 mm (H)

\*Ensure 70°C ambient and 1.2 m/s airflow at the heatsink center to ensure 100% performance.

\*PCIe-PoE572bt/PCIe-N572 supports x8, x4, x1 PCIe lanes.

## 1.2 PCIe-N572 Specifications

Product Model	PCIe-N572
Bus Interface	x4, Gen3 PCI Express
# of 10 GbE Port	2x 10 GbE ports by Broadcom 57416 controller, supporting 9.6 KB jumbo frame
Network Protocol Support	IEEE 802.3 Ethernet interface for 10GBASE-T (IEEE 802.3an) and 1000BASE-T (IEEE 802.3ab)
Support Link Speed	Support 10G/ 1G / 100M/ 10M link speed (CAT 6a cable required for 10G)
RDMA over Converge Ethernet	Support RoCEv2 *Throughput over 9.62 Gbps (verified through PerfTest)
Cable Requirement	CAT 6a or better Ethernet cable (Max 100 meters)
EMC	CE/FCC Class B, according to EN 55032 & EN 55035
Operating Temperature*	-25°C to 70°C rugged operation with airflow
Dimension	Optional low-profile bracket: 167.65 mm (W) x 68.9 mm (H) Standard-height bracket: 167.65 mm (W) x 111.2 mm (H)

\*Ensure 70°C ambient and 1.2 m/s airflow at the heatsink center to ensure 100% performance.

\*PCIe-PoE572bt/PCIe-N572 supports x8, x4, x1 PCIe lanes.

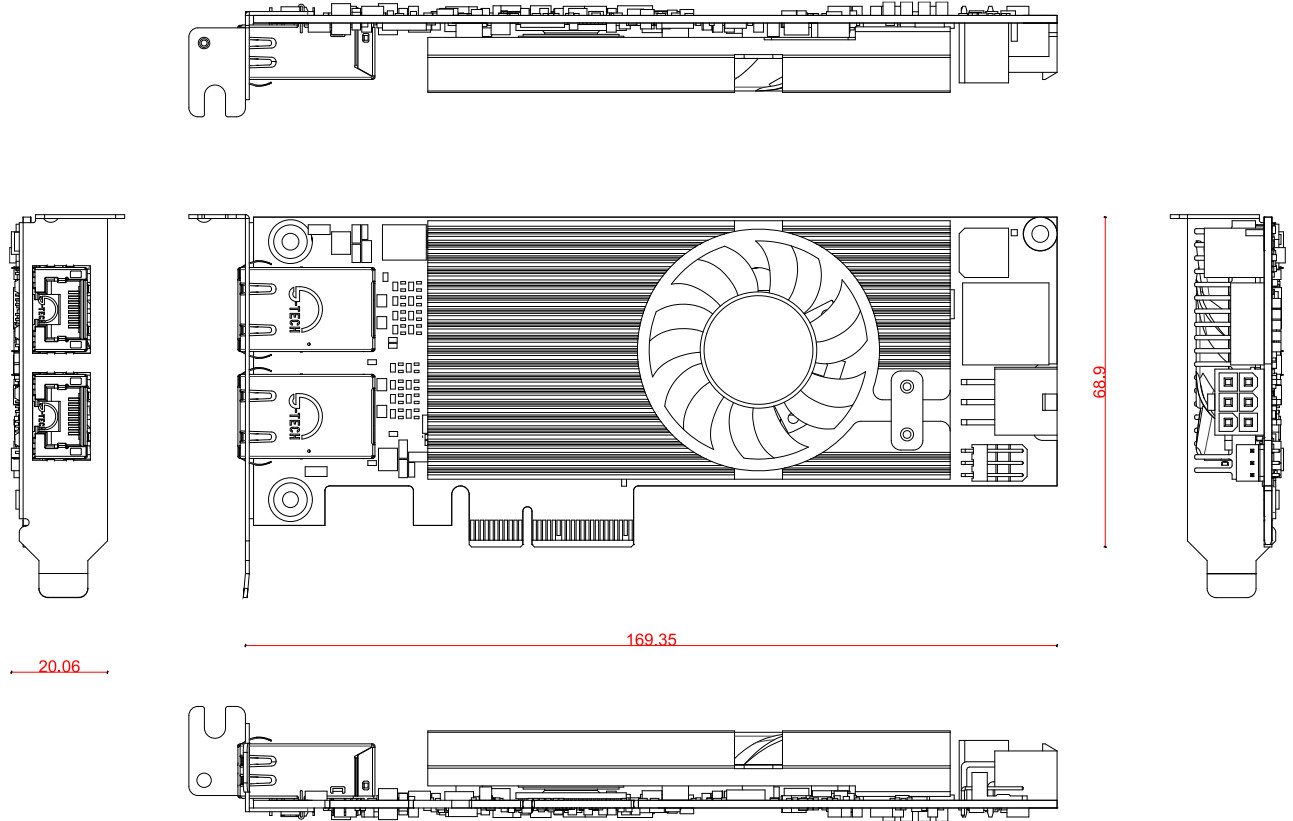
### 1.3 Dimension



**NOTE**

*The cards share the same dimensions, therefore PCIe-PoE572bt will be shown here for demonstration purposes.*

*All measurements are in millimeters (mm).*



## 2 Setting Up Your Card

### 2.1 Unpacking Your PCIe-PoE572bt

Upon receiving the PCIe-PoE572bt package, please check immediately if the package contains all the items listed in the following table. If any item is missing or damaged, please contact your local dealer or Neosys Technology.

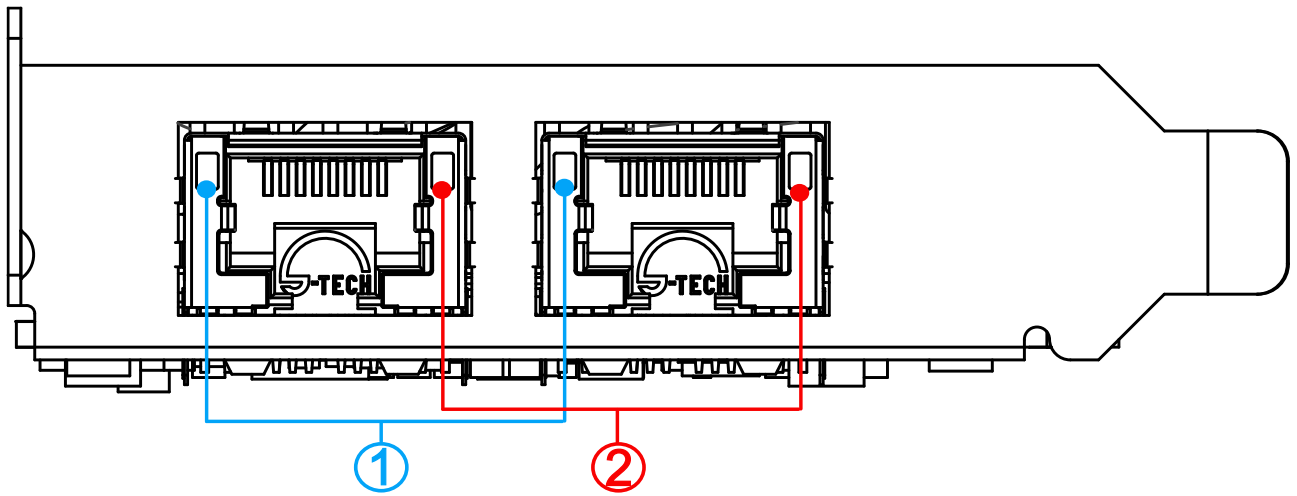
Item	Description	Qty
1	PCIe-PoE572bt	1
2	Screw/ standoff pack	1

### 2.2 Unpacking Your PCIe-N572

Upon receiving the PCIe-N572 package, please check immediately if the package contains all the items listed in the following table. If any item is missing or damaged, please contact your local dealer or Neosys Technology.

Item	Description	Qty
1	PCIe-N572	1
2	Screw/ standoff pack	1

## 2.3 Status LEDs



### Speed LED (1)

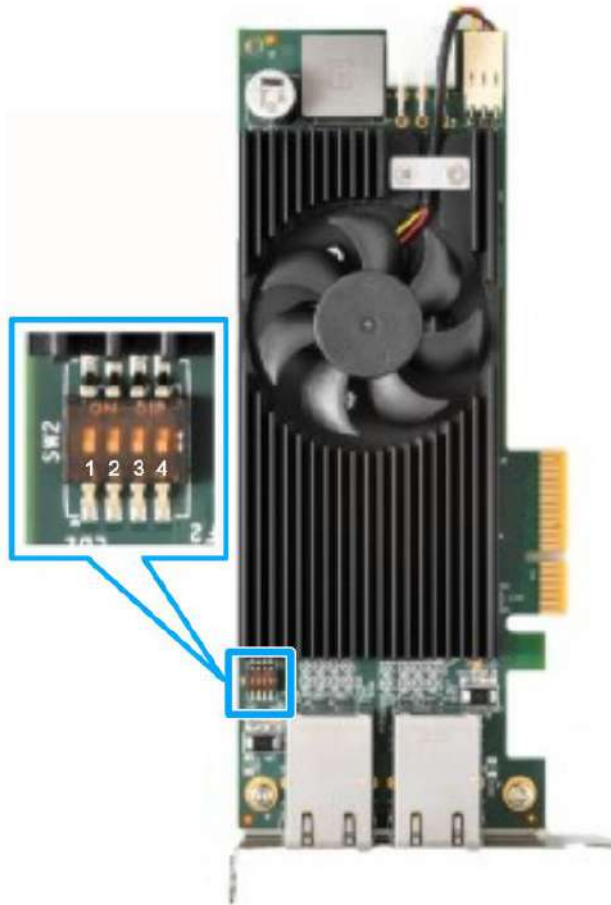
LED Color	Status	Description
Green or orange	Green	10000 Mbps
	Orange	1000 Mbps
	Off	Not connected

### Active/Link LED (2)

LED Color	Status	Description
Green	Off	Ethernet port is disconnected
	On	Ethernet port is connected and no data transmission
	Flashing	Ethernet port is connected and data is transmitting/ receiving



## 2.4 DIP Switches

PCIe-PoE572bt features individual per-port power on/off control via Neousys' API so you may manually cut off or resume the power delivery to the connected PoE device. This feature is designed for failure recovery in the field to reset connected devices. In case you have installed multiple cards, there is a set of DIP switches (indicated in blue) for users to configure board ID. The board ID can be used as a parameter in API to specify the card.

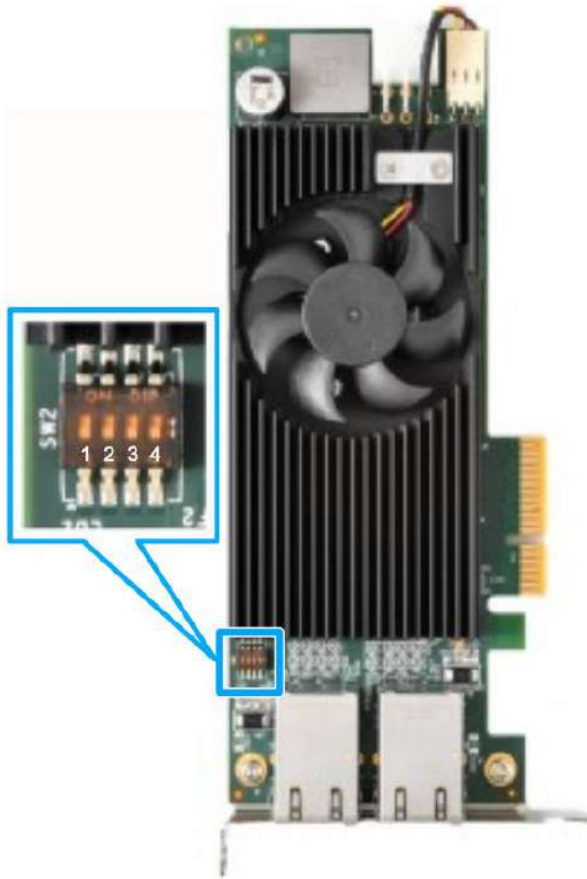


### 2.4.1 Switching Between at and bt Modes


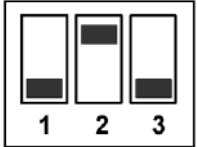
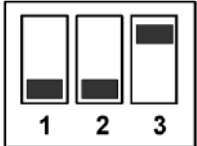
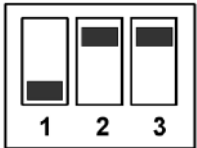
The PCIe-PoE572bt card offers two power supply source methods. Users can choose between at mode (IEEE 802.3at) or high at mode (IEEE 802.3bt) by configuring DIP switch 4.

Mode	DIP Switch 4 Position	Power Supplied
at	 4	Internal 12V from gold finger (total 65W)
bt	 4	External 12V from 6-pin power connector (total 180W)

### 2.4.2 Board ID Settings



The following illustrations describe DIP switch board ID settings. When installing multiple cards, please remember to set a different ID for each card.

Board ID	DIP Switch Position (P1 - P3)
0	
1	
2	
3	



# 3 PCIe-PoE572bt/ PCIe-N572 Card Installation

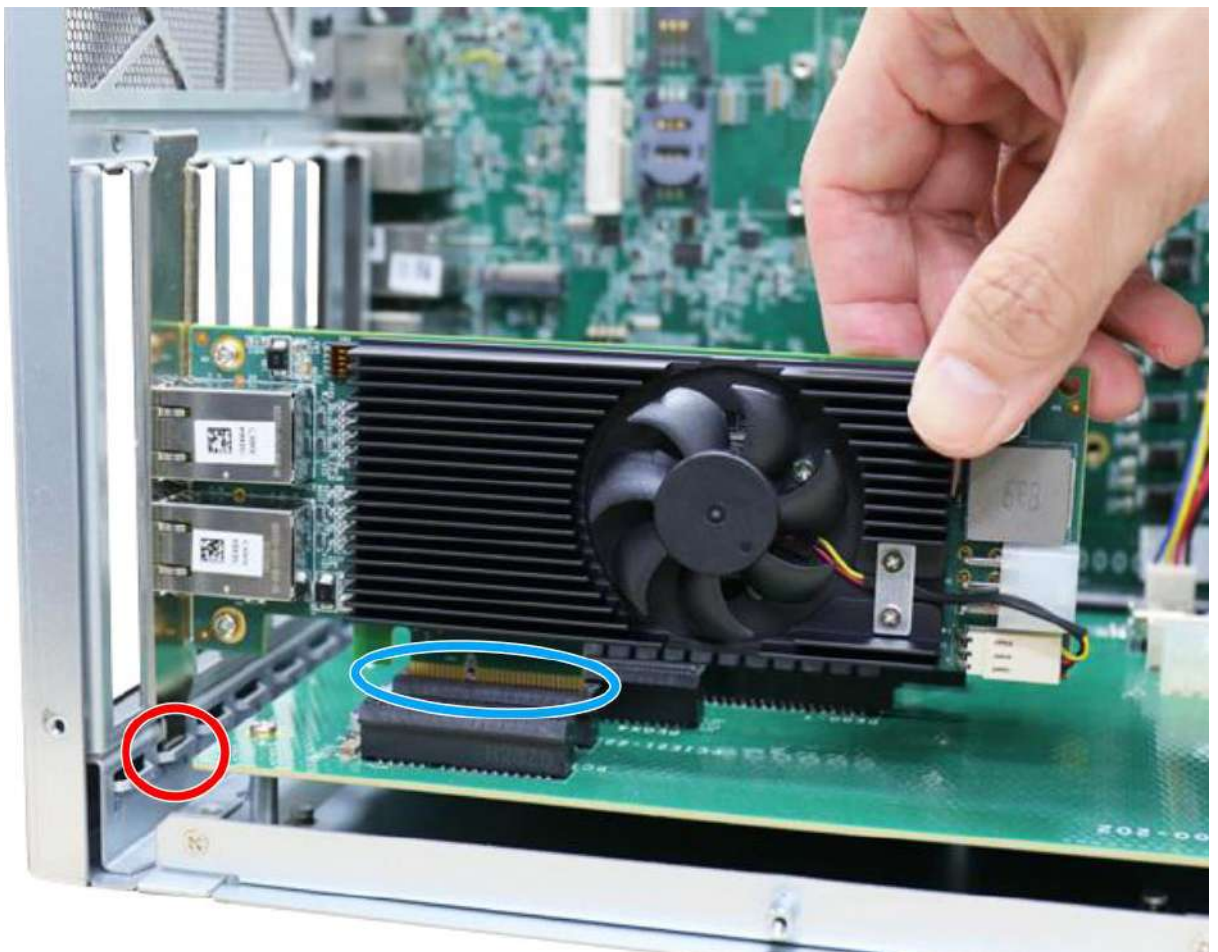
Once you have set up the DIP switch ID of your card for multi-card installation, then you are ready to install it into the system. Please refer to the following installation procedures.

Before disassembling the system enclosure and installing the card, please read the following instructions:

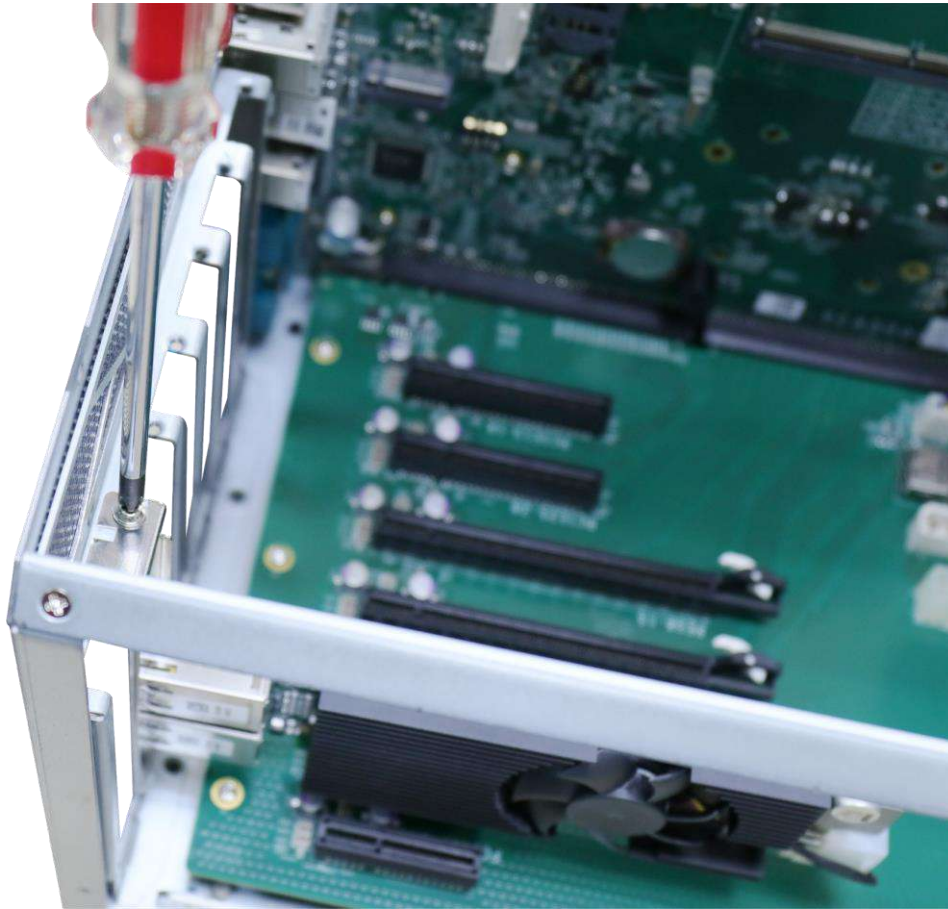
- **DO NOT** remove the card out of the anti-static bag until you are ready to install it into the system.
- It is recommended that only qualified service personnel should install and service this product to avoid injury or damage to the system.
- Please observe all ESD procedures at all times to avoid damaging the equipment.
- Before disassembling your system, please make sure the system has powered off, all cables and antennae (power, video, data, etc.) are disconnected.
- Place the system on a flat and sturdy surface (remove from mounts or out of server cabinets) before proceeding with the installation/ replacement procedure.

### 3.1 Hardware Installation

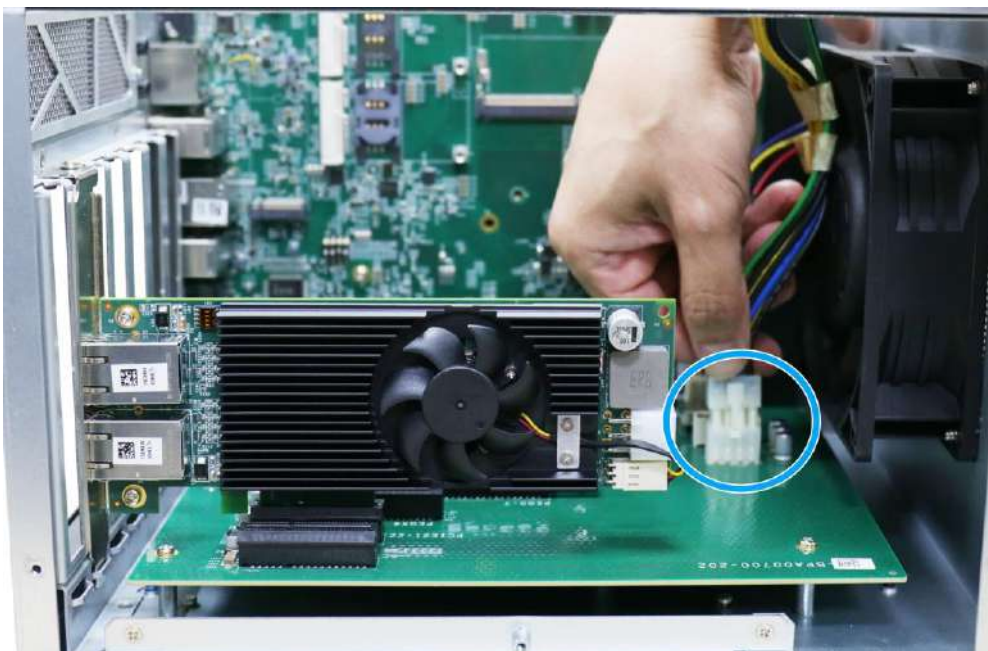
1. Save and close all work in progress.
2. Power off and unplug the power cable from the system you wish to install to.
3. Open the chassis (side panel) of the computer you wish to install the PCIe card into.
4. Locate the x4 PCIe slot or a spare and compatible x16/ x8 PCIe slot.
5. Align and insert PCIe card's gold finger into the PCIe slot (indicated in **blue**) while making sure the card's bracket is inserted into the hinge (indicated in **red**).



- Secure the PCIe card to the chassis with a screw. If you wish to utilize full power load of PoE (PCIe-PoE572bt only), please refer to the following steps. If not, please reinstall the enclosure when done to complete the installation.



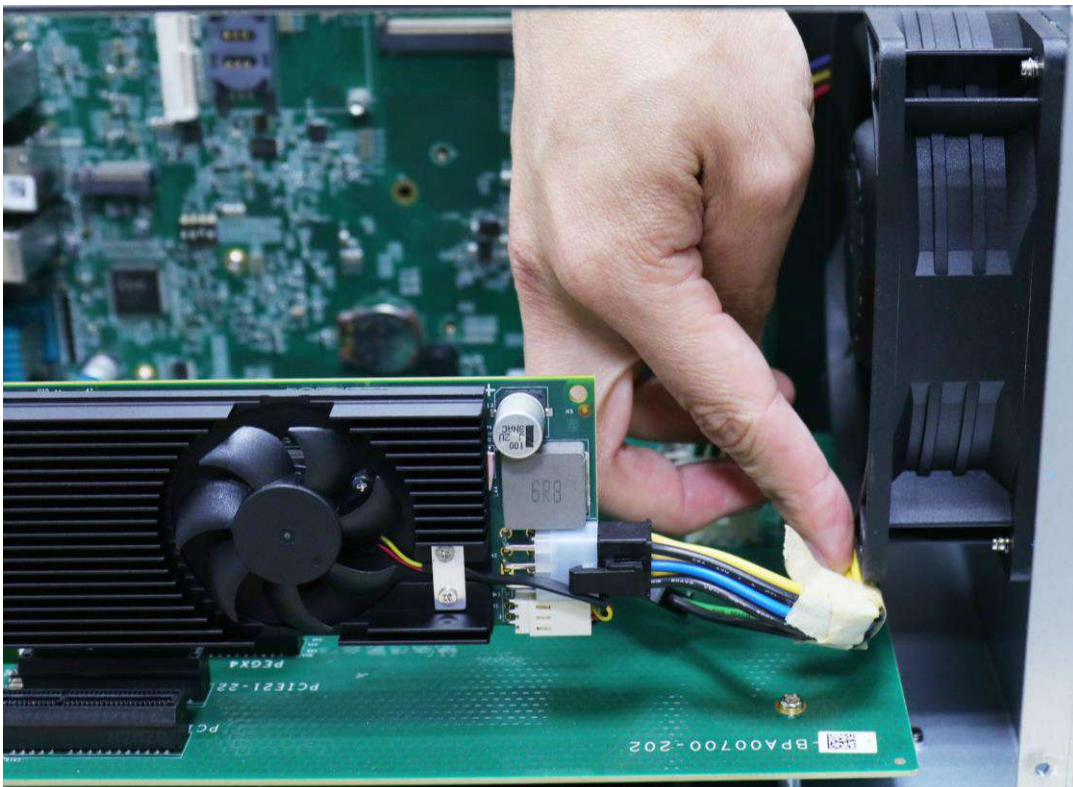
- To utilize the full power load of PoE (PCIe-PoE572bt only), please connect the 6-pin PCIe power cable to the daughter board.



8. Connect the other end of the 6-pin PCIe power cable to 6-pin connector at the end of PCIe-PoE572bt.



9. It is recommended to tuck the cable underneath the fan to ensure the 6-pin power cable is out of way (from fan blades).



10. Reinstall the system's chassis (panel) to complete the PCIe-PoE572bt installation process.

# 4 OS Support and Driver Installation

## 4.1 Operating System Compatibility

Due to Intel's policy, the system only provides driver support for Intel® x86 architecture. For Linux support, please use Linux kernel versions no later than 5.15. The following list contains the operating systems which have been tested in Neosys Technology Inc.

1. Microsoft Window 10 LTSC 2021 (x64)
2. Ubuntu 20.04.5 LTS, 22.04 LTS, 22.04.1 LTS or other distribution with kernel version  $\geq$  5.15

\*/\*\*



### NOTE

*\*For Linux system, user may need to manually compile and install the driver for Intel®I226 GbE controller if the driver is not embedded in kernel.*

Neosys may remove or update operating system compatibility without prior notice. Please contact us if your operating system of choice is not on the list.

## 4.2 Driver Installation

To manually install the drivers, please click on this [link](#) to download the drivers.

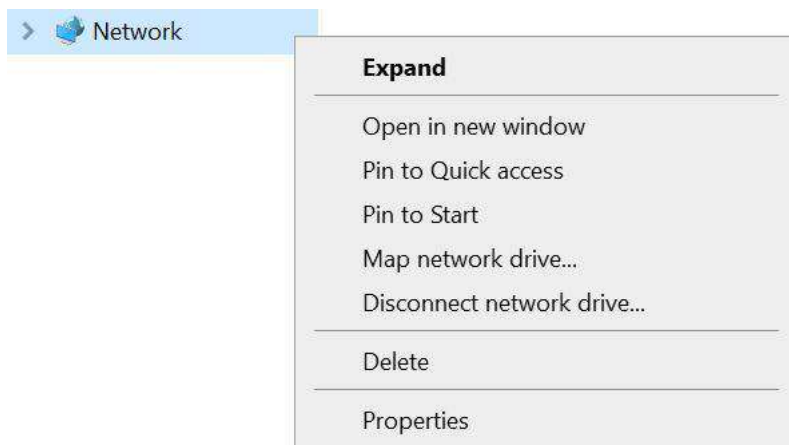
# 5 Network Settings

PCIe-PoE572bt offers Gigabit Ethernet connectivity via Broadcom 57416 controller. When connecting to a high-speed PoE device, such as a GigE camera, you can configure driver settings for optimum transmission throughput and connection stability.

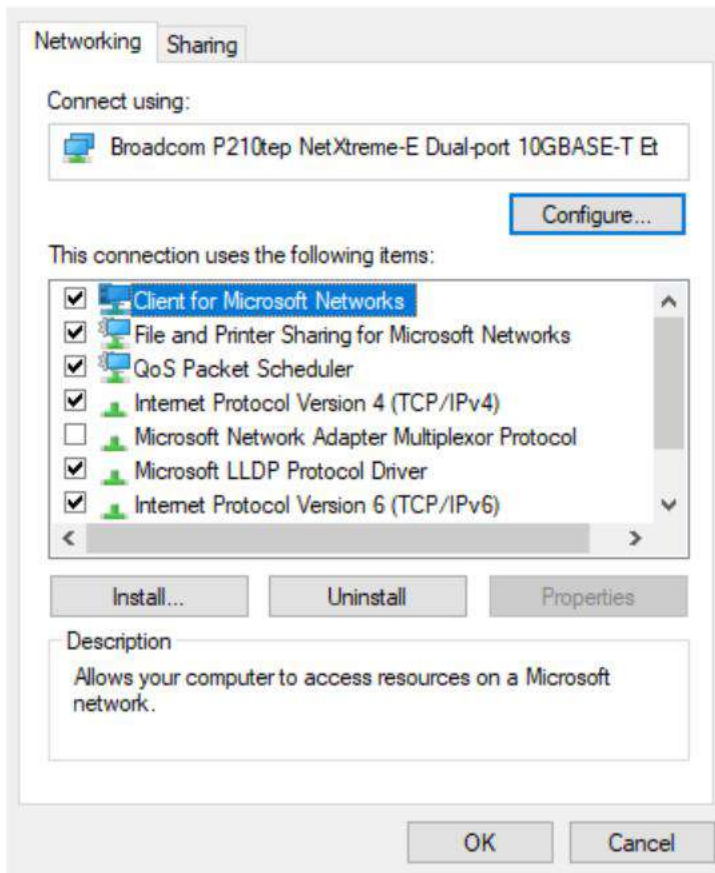
## 5.1 Jumbo Frame

Jumbo frames are Ethernet frames with more than 1500 bytes of payload. By increasing the payload size, large data packets can be transferred with less interruption, which reduces CPU utilization and increases overall data throughput. Broadcom 57416 controller supports jumbo frame size of up to 9.5 Kbytes. Once the Broadcom 57416 driver is installed, you may configure jumbo frame settings by executing the following steps:

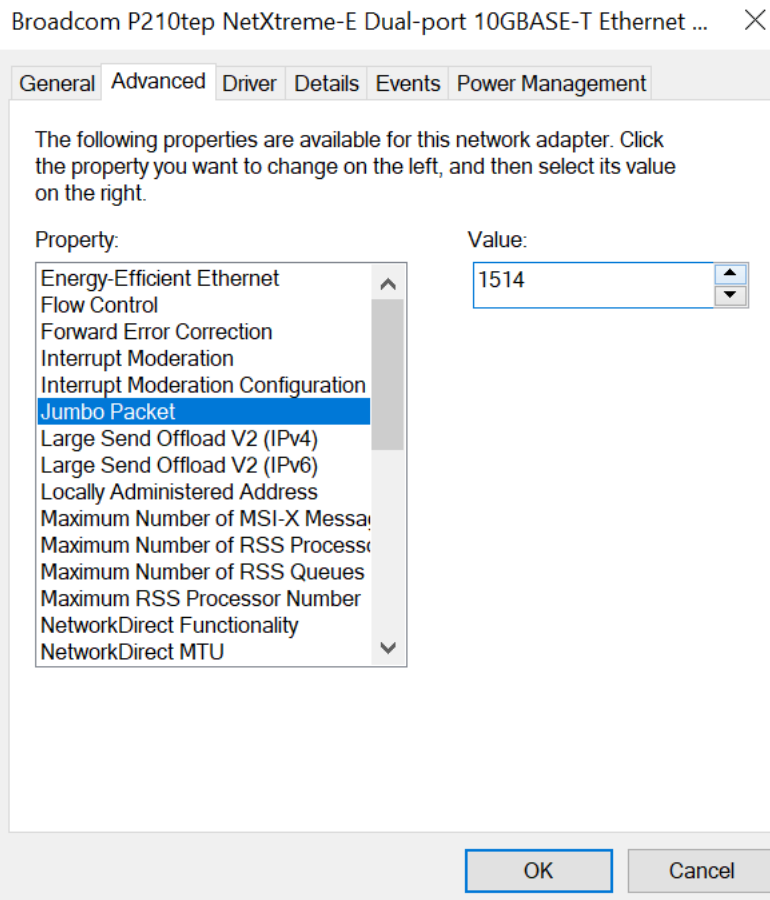
1. On your keyboard, press **Windows key + E**, right click on **Network** and select **Properties**.



2. Right click on the corresponding **Local Area Connection** and click on **Properties**.



3. Click on the **Configure** button, the following dialog appears and click on the **Advanced** tab. Highlight **Jumbo Packet** and select a jumbo frame size from the Value drop-down list (9014 Byte is recommended for connecting devices with high data rate).



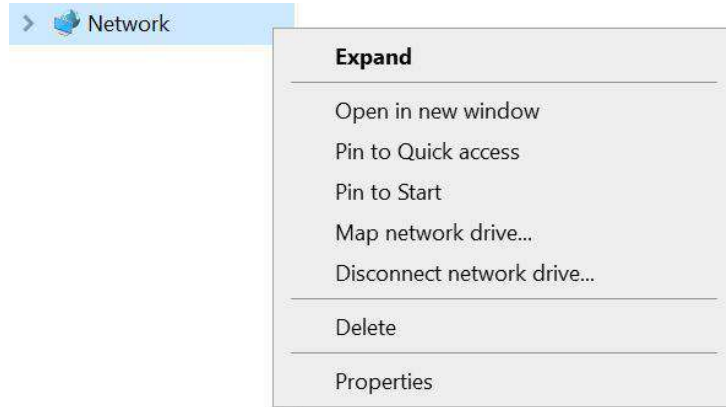


## 5.2 NetworkDirect Functionality (RDMA)

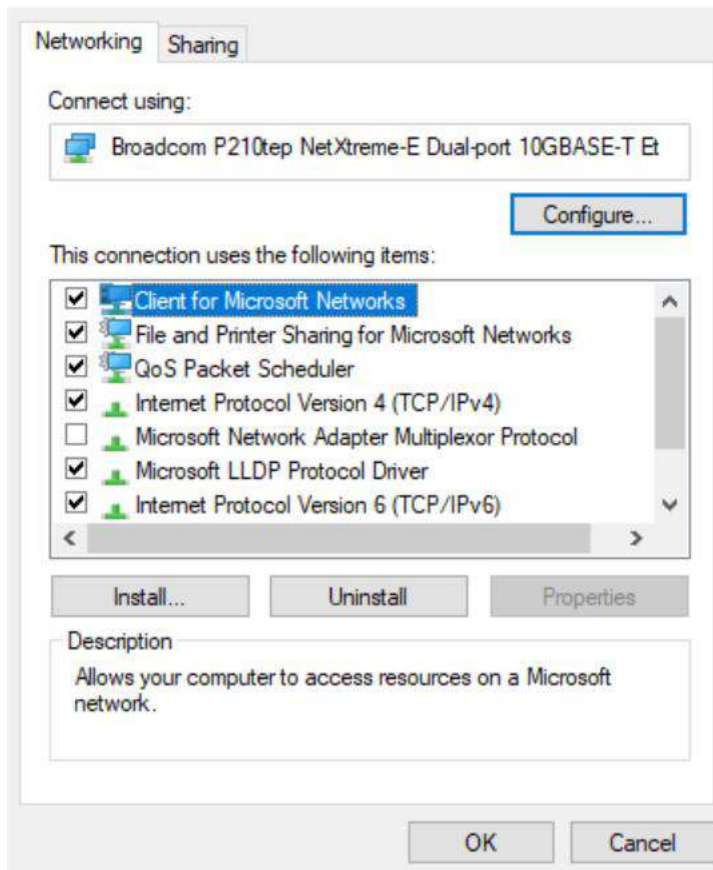
NetworkDirect is a high-performance networking interface that enables Remote Direct Memory Access (RDMA) functionality. RDMA allows direct memory access between computers in a network without involving the operating system, minimizing CPU overhead and latency. NetworkDirect supports efficient data transfer by bypassing traditional network stack layers, making it ideal for high-speed, low-latency applications like data centers, HPC (High-Performance Computing), and storage systems. It works with technologies like RoCE (RDMA over Converged Ethernet) to ensure fast and scalable communication. By offloading data movement tasks to hardware, it enhances throughput and reduces resource usage, crucial for performance-critical environments.

To configure NetworkDirect Functionality (RDMA), please refer to the following steps:

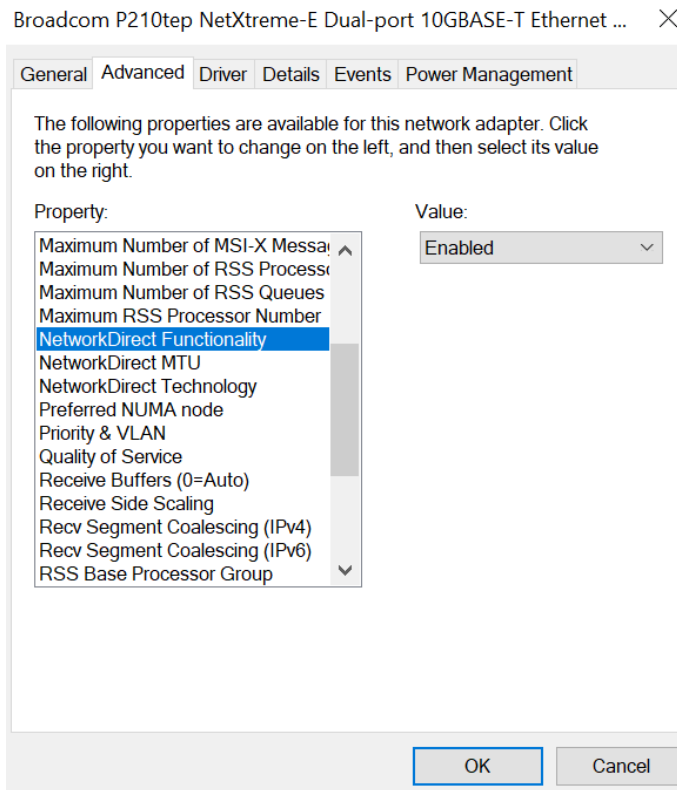
1. On your keyboard, press **Windows key + E**, right click on **Network** and select **Properties**.



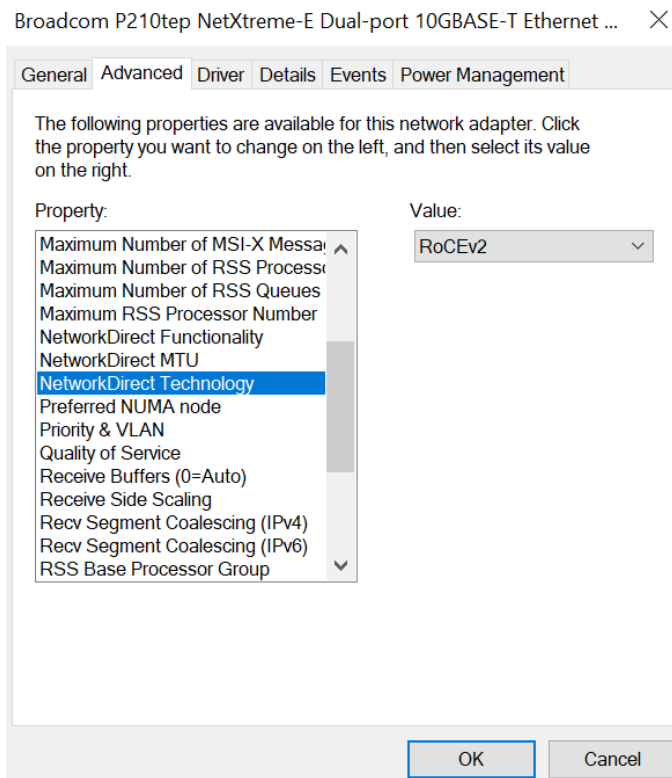
2. Right click on the corresponding **Local Area Connection** and click on **“Properties”**.



- Click on the **Configure** button, the following dialog appears and click on the **Advanced** tab. Scroll down the Property list and highlight **NetworkDirect Functionality**, select Enabled/ Disabled.



- Scroll down to **NetworkDirect Technology**, you should see RoCEv2 in the Value column has been activated.

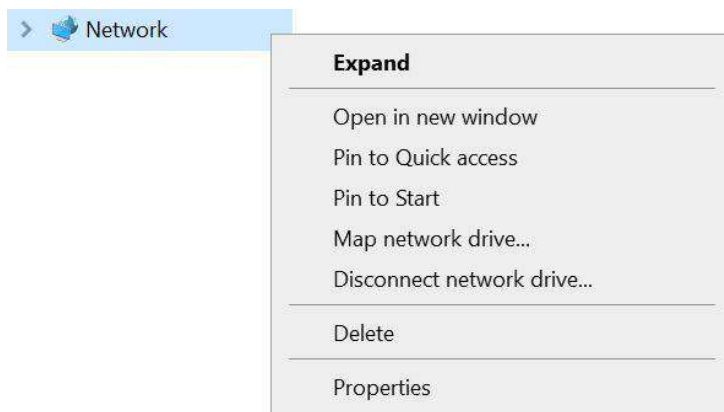


## 5.3 Receive Buffers

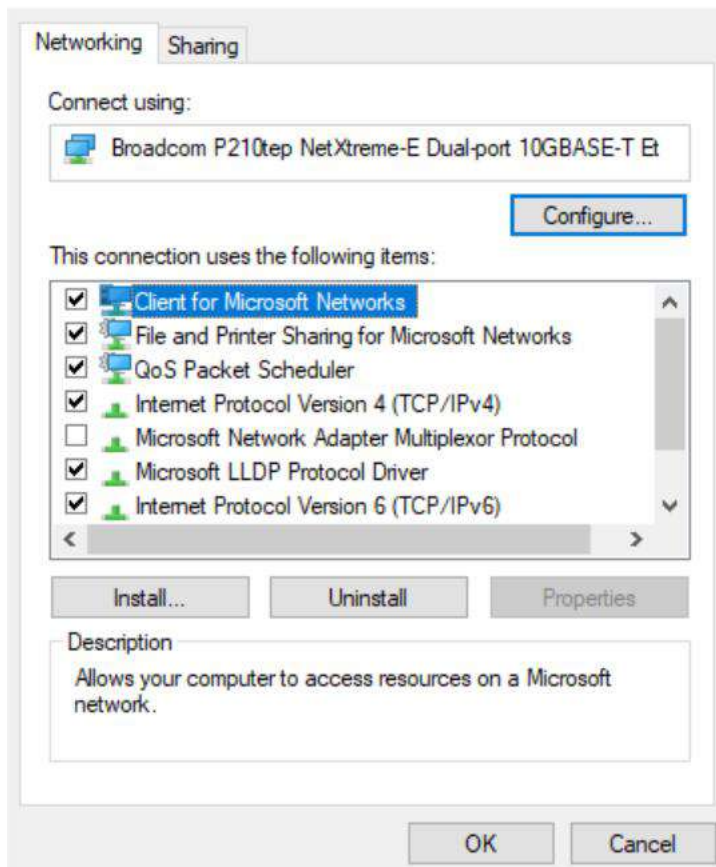
Receive Buffers is another option which can affect data throughput. It determines the size of memory buffer allocated for receiving data. Increasing the size of Receive Buffers can improve the performance of receiving data. The default setting of Receive Buffers is 256 bytes. When connecting to an Ethernet device that generates large amount of data, you can set this option to a larger value (maximum 2048 bytes) for better performance.

To configure Receive Buffers settings, please refer to the following steps:

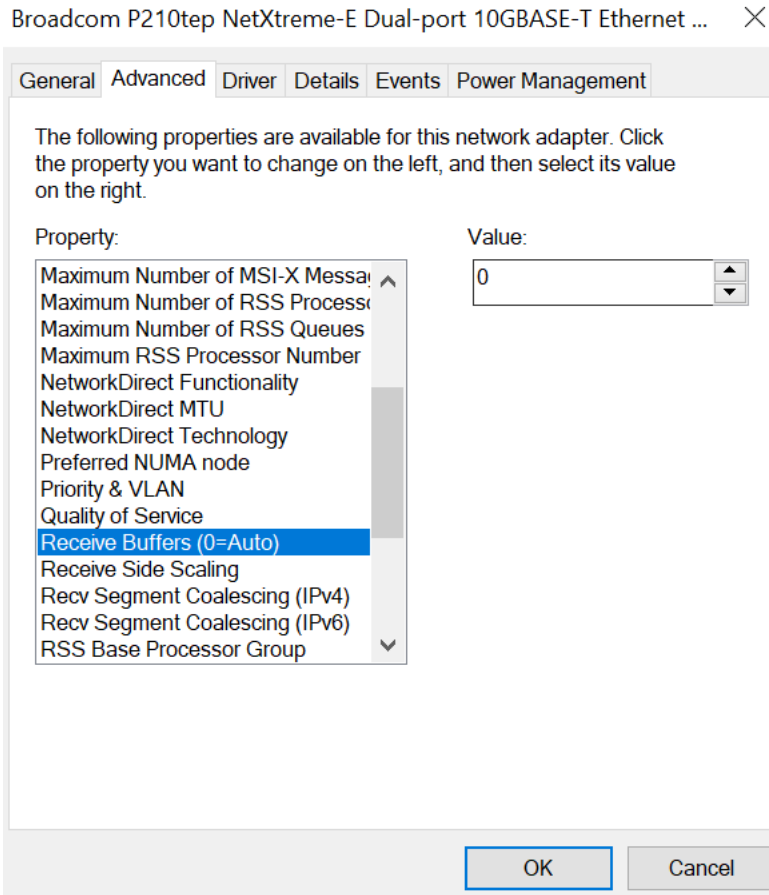
1. On your keyboard, press **Windows key + E**, right click on **Network** and select **Properties**.



2. Right click on the corresponding **Local Area Connection** and click on “**Properties**”.



3. Click on the **Configure** button, the following dialog appears and click on the **Advanced** tab. Scroll down the Property list and highlight **Receive Buffers** and enter a setting into the **Value** column (2048 Bytes is recommended for connecting devices with high data rate).

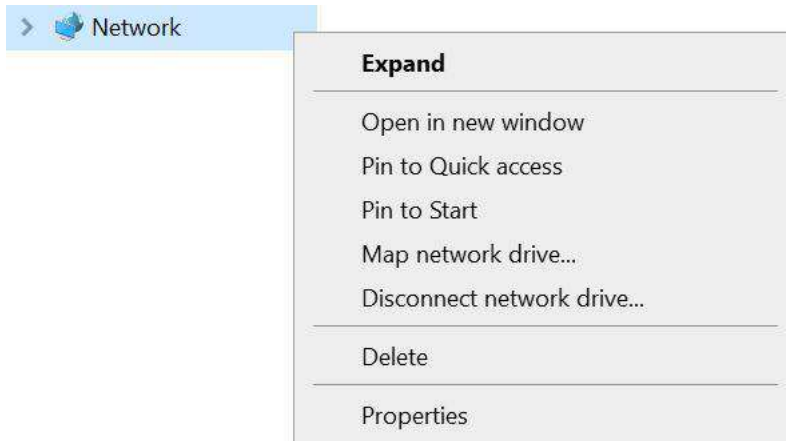


## 5.4 Transmit Buffers

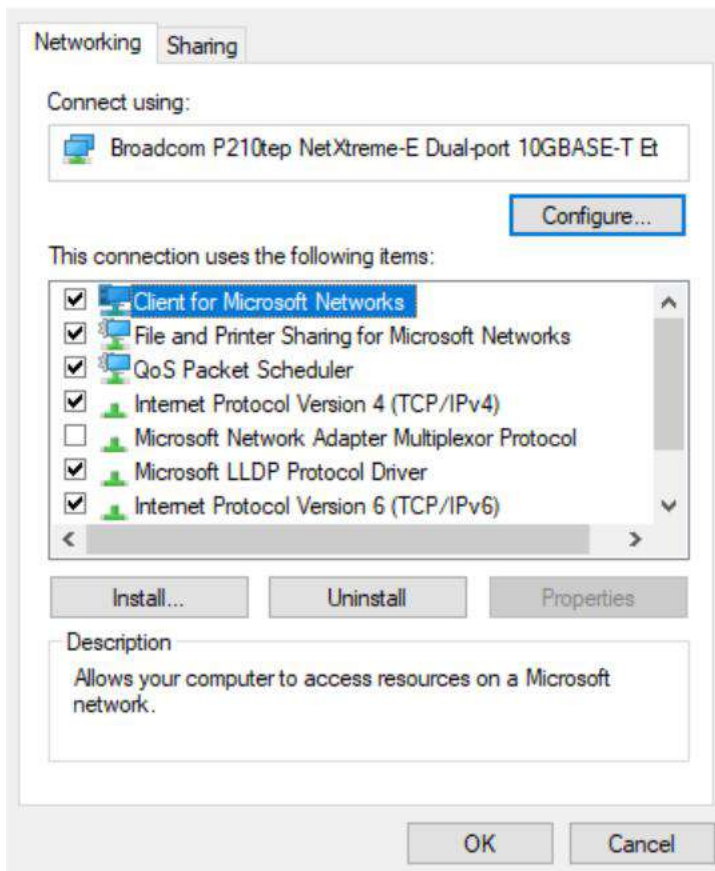
Like Receive Buffers, Transmit Buffers can affect the transmission performance. The default setting of Transmit Buffers is 1024 bytes. If you encounter a performance issue while transmitting data, you can adjust the size of Transmit Buffers to a larger value (maximum 2048 bytes) for better performance.

To configure Transmit Buffers settings, please refer to the following steps:

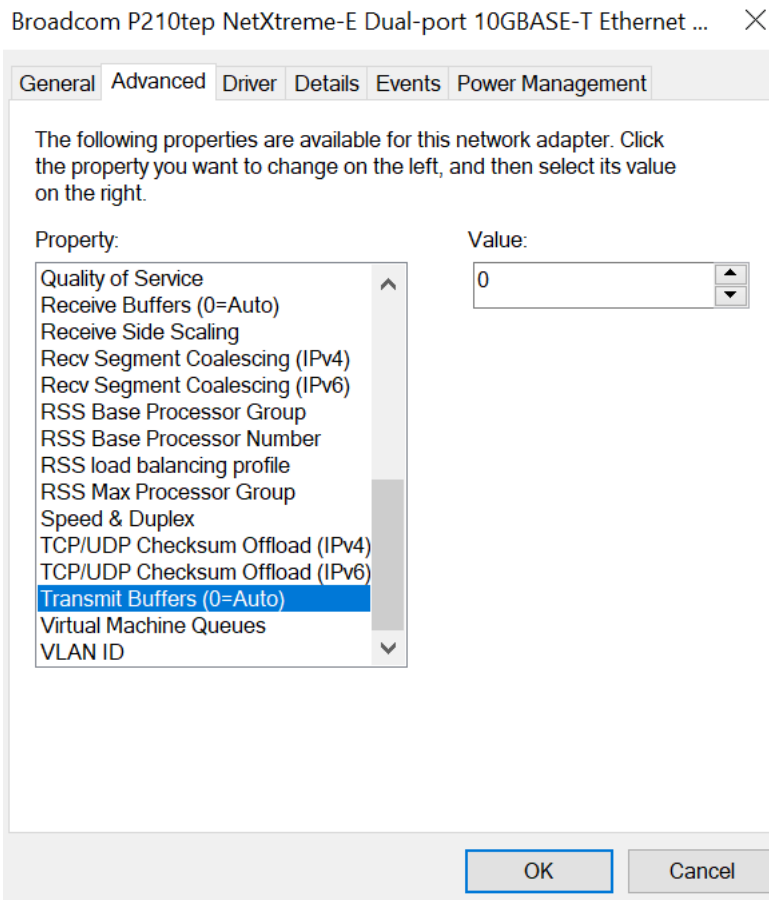
1. On your keyboard, press **Windows key + E**, right click on **Network** and select **Properties**.



2. Right click on the corresponding **Local Area Connection** and select **Properties**.



3. Click **Configure** button, the following dialog appears and click on the **Advanced** tab. Scroll down and highlight **Transmit Buffers** and enter a setting into the **Value** column (2048 Bytes is recommended for connecting devices with high data rate).

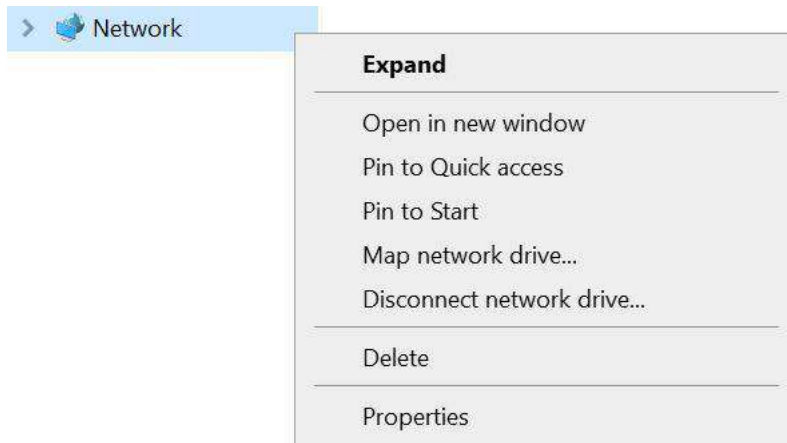


## 5.5 Port Speed Configuration

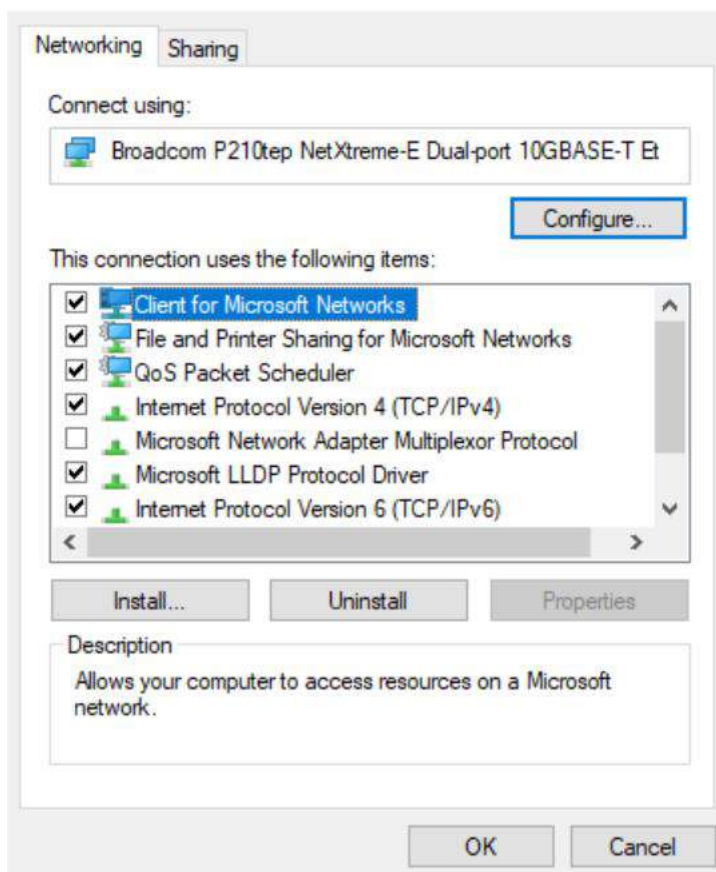
The 10Gbps card is backwards compatible with 1Gbps speeds in half or full duplex mode.

To configure speed settings, please refer to the following steps:

1. On your keyboard, press **Windows key + E**, right click on **Network** and select **Properties**.

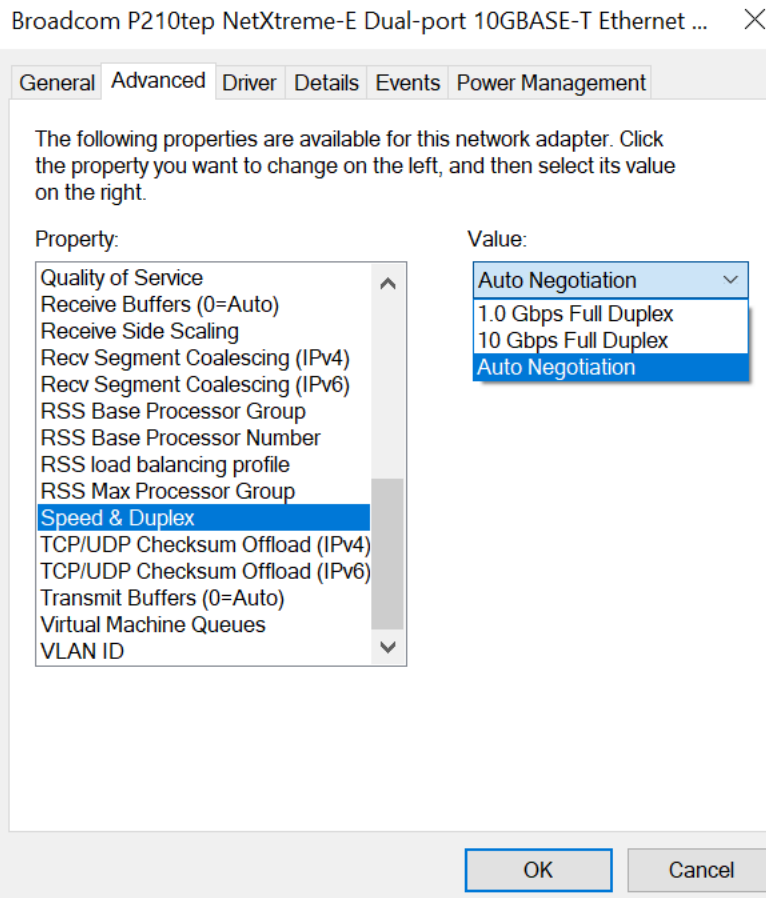


2. Right click on the corresponding **Local Area Connection** and select **Properties**.





3. Click **Configure** button, the following dialog appears and click on the **Advanced** tab. Scroll down and highlight **Speed & Duplex** and in the Value dropdown column, select a preferred speed.



# Appendix A Using Per-Port PoE On/Off Control

PCIe-PoE572bt supports power on/off control for each of its PoE ports. With provided function APIs, users can turn on or turn off the power of each PoE port manually for fault-recovery or device power reset purpose. To use the function, you need to install the WDT\_DIO\_Setup.exe driver package.

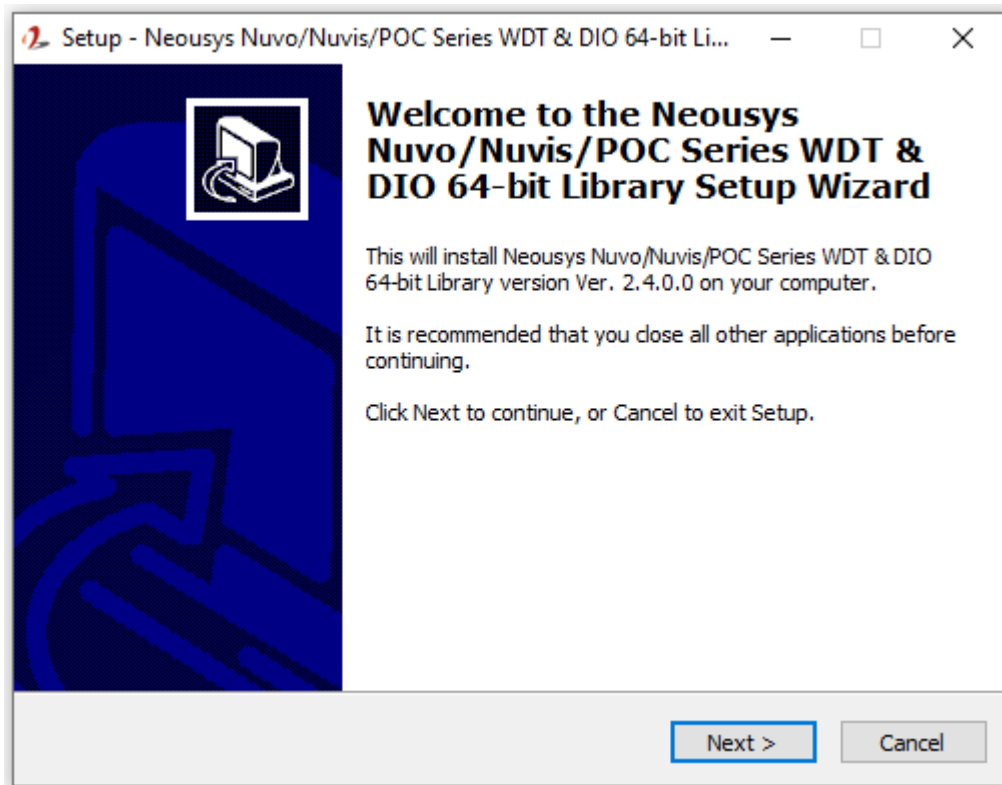
**NOTE**

Please install WDT\_DIO\_Setup\_v2.4.0.0 or later versions.

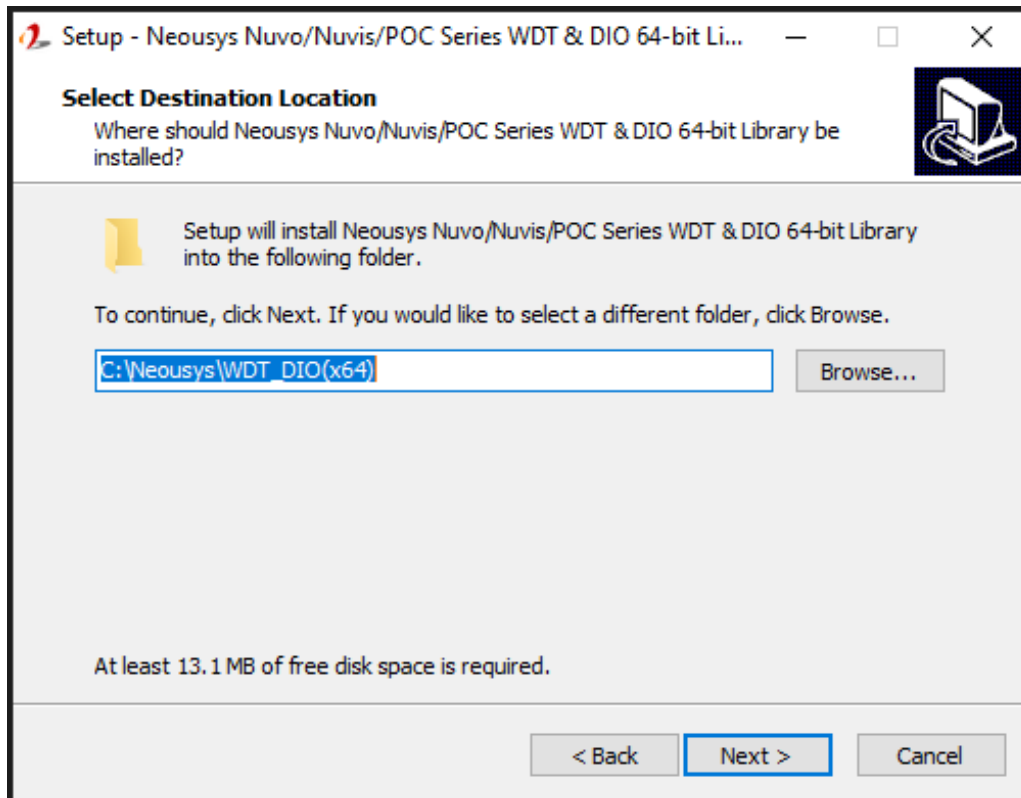
## Driver Installation

The per-port PoE on/off control function library is delivered as a part of Neosys driver setup package (WDT\_DIO\_Setup). Please use **WDT\_DIO\_Setup\_64\_v2.4.0.0.exe** or download the latest version from [here](#).

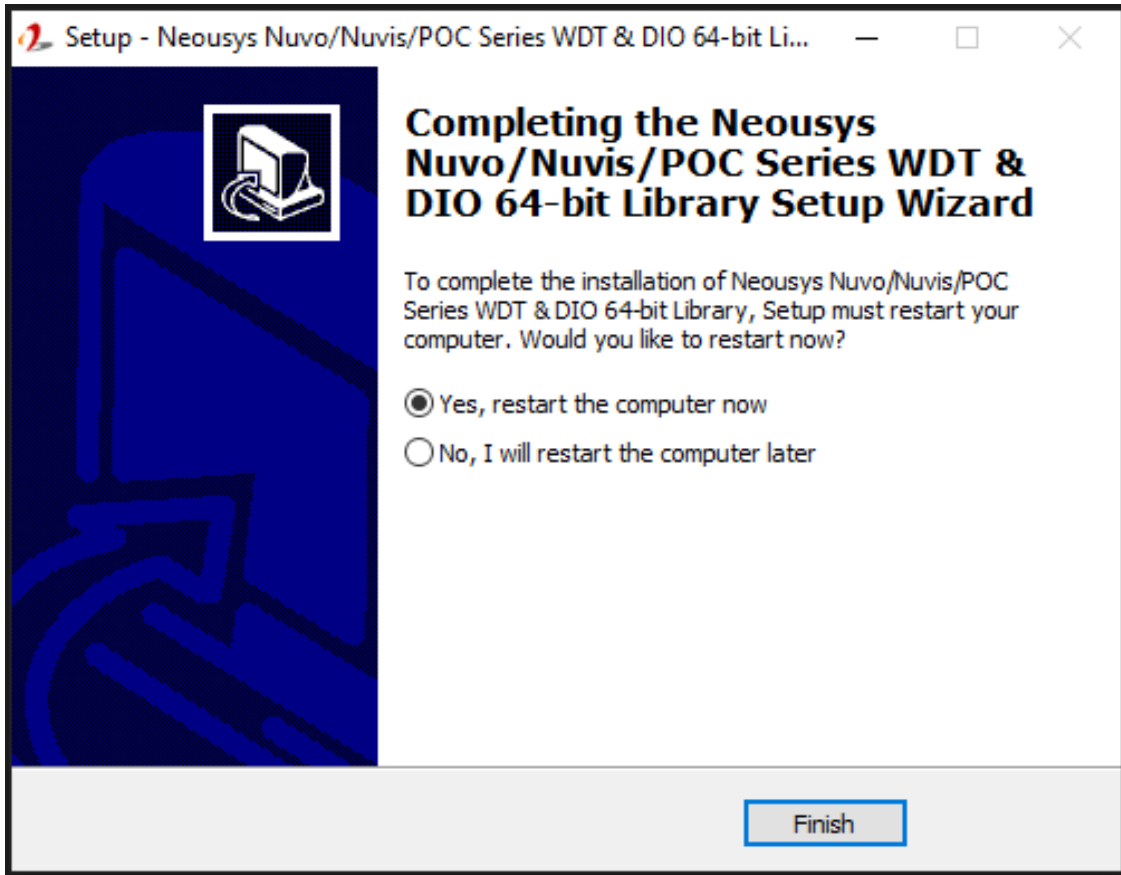
1. Execute **WDT\_DIO\_Setup\_v2.4.0.0.exe**. The following dialog appears.



2. Click “Next >” and you may specify a directory you would like to install the files to or you can install to the default directory “C:\Neosys\WDT\_DIO”.



3. Once the installation is finished, a dialog appears to prompt you to reboot the system. The WDT & DIO library will take effect after the system rebooted.



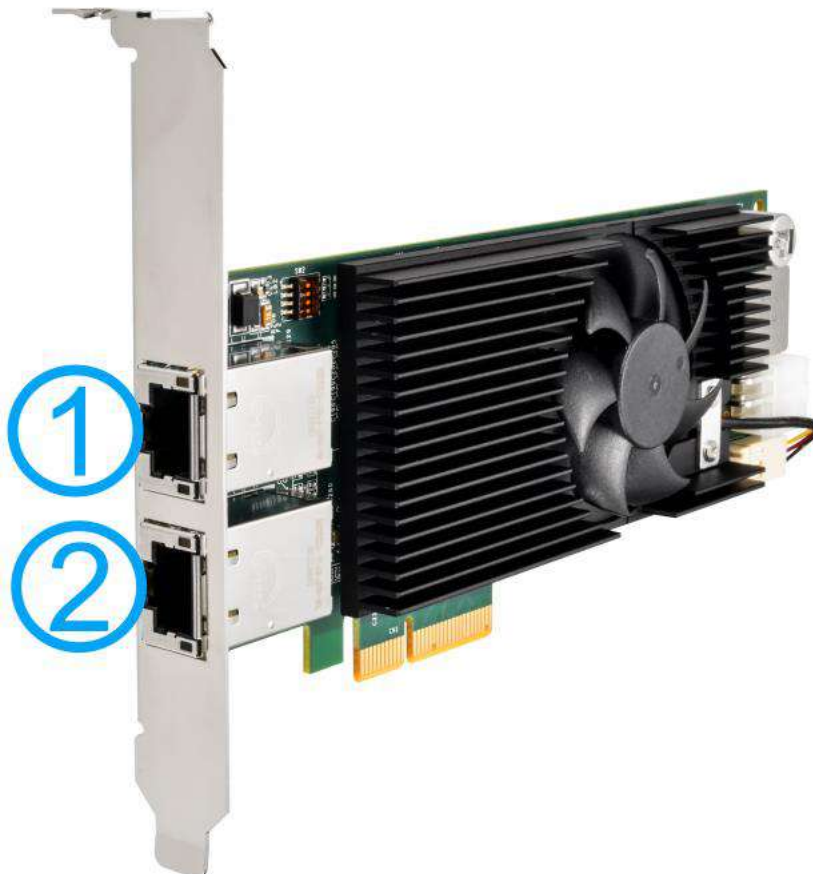
4. When you programming your program, the related files are located in

<b>Header File:</b>	\Include
<b>Library File:</b>	\Lib
<b>Function Reference:</b>	\Manual
<b>Sample Code:</b>	\Sample\POE_Demo (PoE per-port Control Demo)

## Per-Port On/Off Control Function Reference

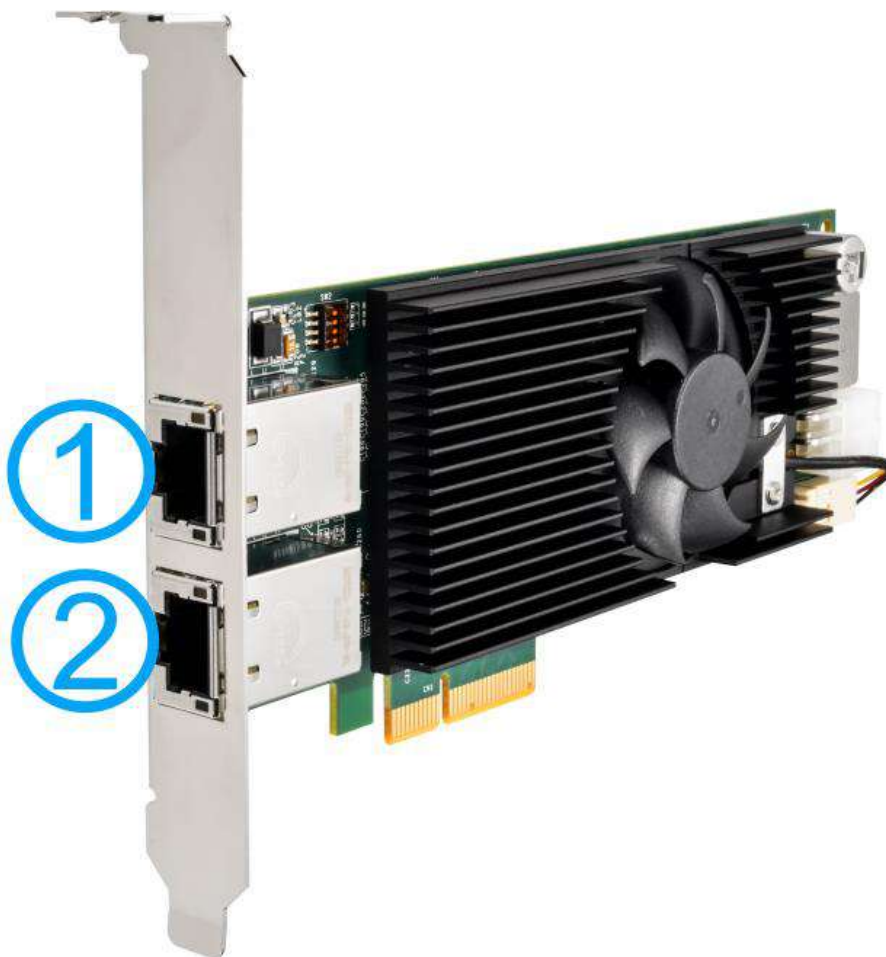
### PCI\_GetStatusPoEPort

<b>Syntax</b>	BYTE PCI_GetStatusPoEPort(DWORD boardId, DWORD port);
<b>Description</b>	Acquire current power on/off status of designated PoE port.
<b>Parameter</b>	<p><b>boardId</b>            DWORD value (0 - 3) to indicate board ID set for your card. Please refer to <a href="#">DIP switch</a> settings for your PCIe-PoE card.</p> <p><b>port</b>            DOWRD value (1 - 2) to specify the PoE port.</p>
<b>Return Value</b>	Returns 1 if PoE power is on, 0 if PoE power is off.
<b>Usage</b>	<pre>           DWORD boardID;           DWORD port;           BYTE PoEStatus;            //Get PoE power status from board #0, port #1.           boardID = 0;           port = 1;           PoEStatus = PCI_GetStatusPoEPort ( boardID, port);         </pre>



### PCI\_EnablePoEPort

<b>Syntax</b>	BOOL PCI_EnablePoEPort(DWORD boardId, DWORD port);
<b>Description</b>	Enable (turn on) PoE power for designated PoE port.
<b>Parameter</b>	<p><b>boardId</b></p> <p>DWORD value (0 - 3) to indicate board ID set for your card. Please refer to <a href="#">DIP switch</a> settings for your PCIe-PoE card.</p> <p>DOWRD value (1 - 2) to specify the PoE port.</p>
<b>Return Value</b>	Returns TRUE if successful, FALSE if failed.
<b>Usage</b>	<pre> DWORD    boardID; DWORD    port; BOOL     RetVal;  //Enable PoE power status from board #0, port #1. boardID = 0; port = 1; RetVal= PCI_EnablePoEPort ( boardID, port); </pre>



### PCI\_DisablePoEPort

<b>Syntax</b>	BOOL PCI_DisablePoEPort(DWORD boardId, DWORD port);
<b>Description</b>	Disable (turn off) PoE power for designated PoE port.
<b>Parameter</b>	<p><b>boardId</b></p> <p>DWORD value (0 - 3) to indicate board ID set for your card. Please refer to <a href="#">DIP switch</a> settings for your PCIe-PoE card.</p> <p>DWORD value (1 - 2) to specify the PoE port.</p>
<b>Return Value</b>	Returns TRUE if successful, FALSE if failed.
<b>Usage</b>	<pre> DWORD boardID; DWORD port; BOOL RetVal;  //Disable PoE power status from board #0, port #1. boardID = 0; port = 1; RetVal= PCI_DisablePoEPort ( boardID, port); </pre>

